

Gallatin County Weekly COVID-19 Surveillance Report – May 13, 2022

As a supplement to the data provided on the [COVID-19 Dashboard](#), Gallatin City-County Health Department (GCCHD) will release this weekly surveillance report each Friday. The report includes additional epidemiologic data useful for understanding the current COVID-19 pandemic in Gallatin County, Montana.

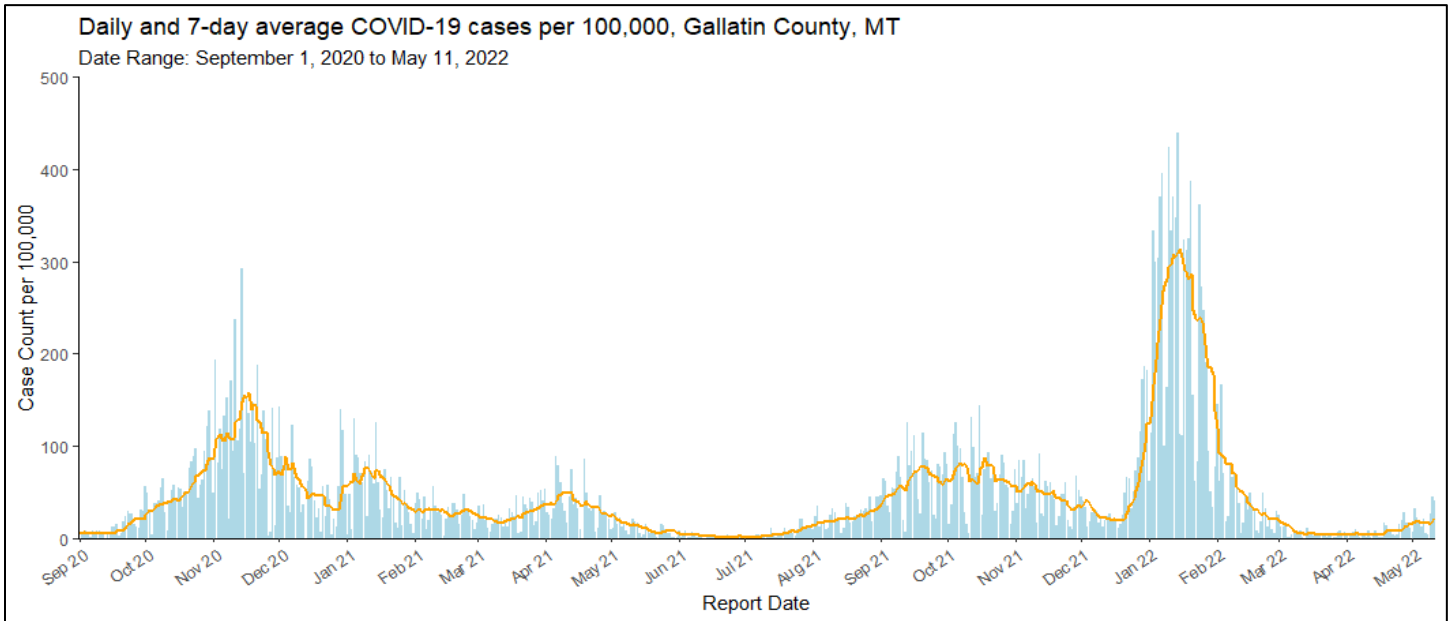


Figure 1. Describes the number of daily cases and 7-day rolling average of cases per 100,000 residents in Gallatin County. Blue bars indicate daily case reports per 100,000 residents and the orange line represents the 7-day rolling average of cases per 100,000 residents from 9/1/2020 to 5/11/2022. The 7-day rolling average of daily cases per 100,000 residents was 21.9 cases per 100,000 on 5/11/2022, a 24.43% increase from 17.6 cases per 100,000 on 5/4/2022.

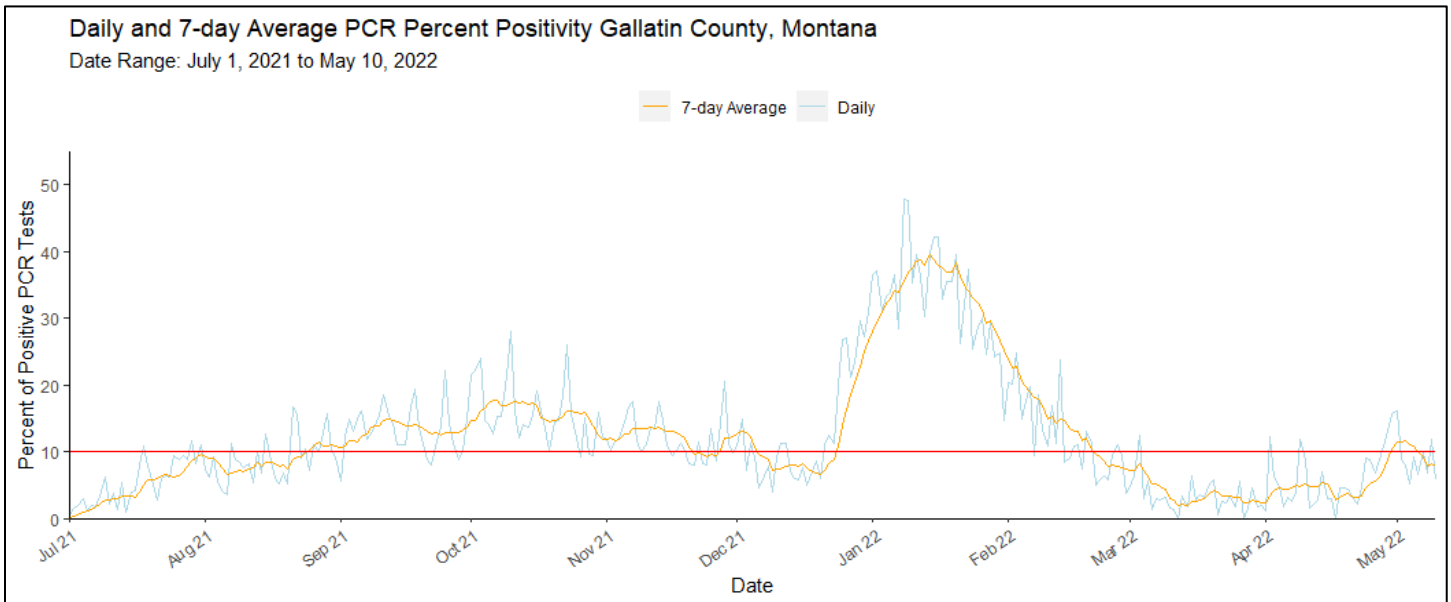


Figure 2. Describes the percent of positive PCR* tests by day and a 7-day rolling average of the percent of positive tests. Public health experts say a positivity rate above 10% (red line) may mean more testing is necessary in order to avoid missing a significant number of cases in the community. The 7-day rolling average of percent positive was 7.9% on 5/10/2022, a 31.89% decrease from the 11.6% positivity rate for the 7-day period that ended on 5/3/2022.

*As of 4/4/2022 the U.S. Department of Health & Human Services removed the requirement for laboratories and other test sites to report negative antigen results.

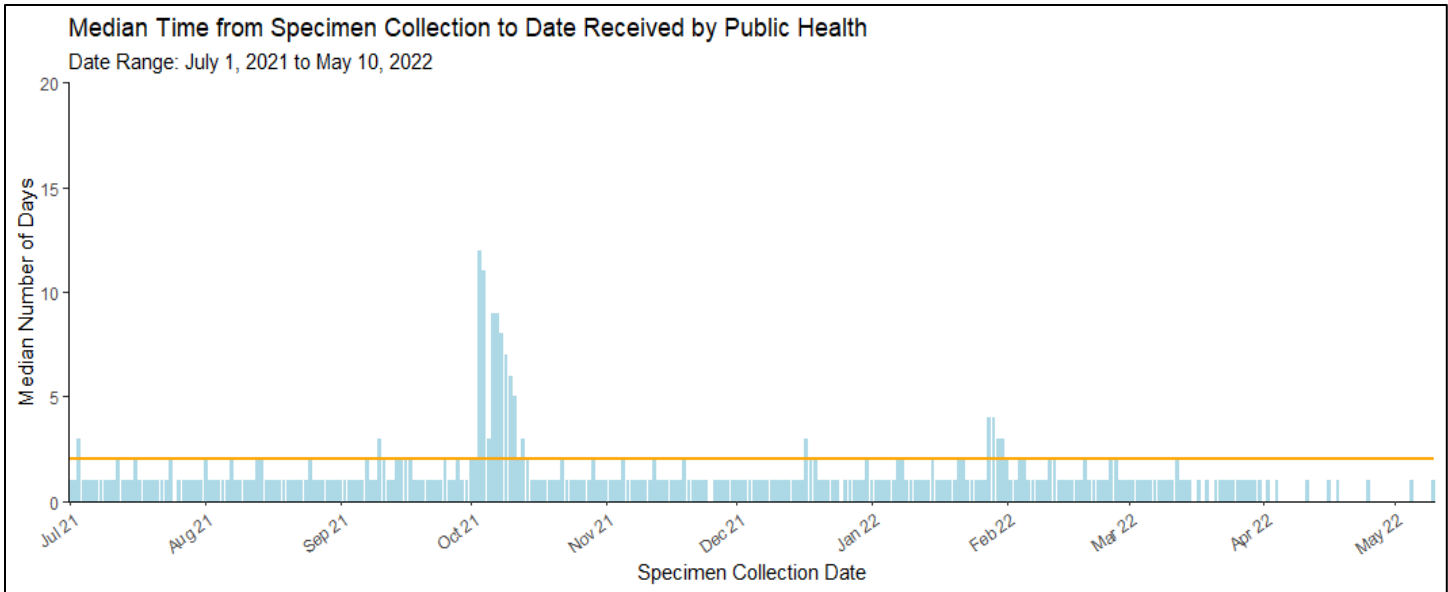


Figure 3. Describes the median number of days it takes a specimen collected until the result of the laboratory test is sent to GCCHD. The orange line in the figure above denotes 2 days. These data only include laboratory tests transmitted electronically via the Montana Infectious Disease Information System (MIDIS). Ideally, local health departments receive test results within 24-48 hours of specimen collection. Consistent delays greater than that make it more difficult to slow spread of the disease through isolation and quarantine. For cases reported during the period 12/28/2021 to 5/10/2022 the median time from specimen collection to report to public health was 1 day. Days with no blue bars indicate that the majority of test results were received on the same day the tests were collected.

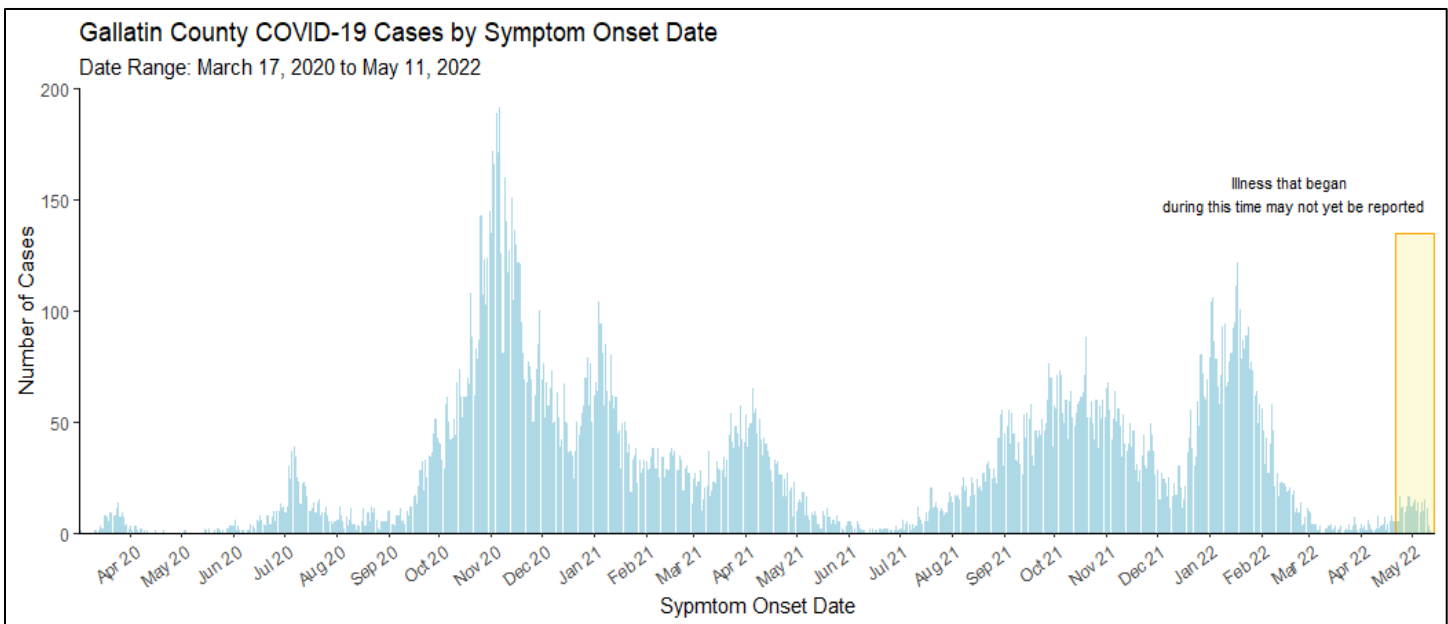


Figure 4. Epidemic curve of cases residing or recovering in Gallatin County at the time of COVID-19 diagnosis displayed by date of symptom onset. Data only includes cases with onset date information reported to GCCHD between 3/17/2020 to 5/4/2022. Onset date data may be unavailable because the COVID-19 case was asymptomatic, unable to determine when symptoms started, onset date is not yet reported or the case was not responsive to public health outreach.

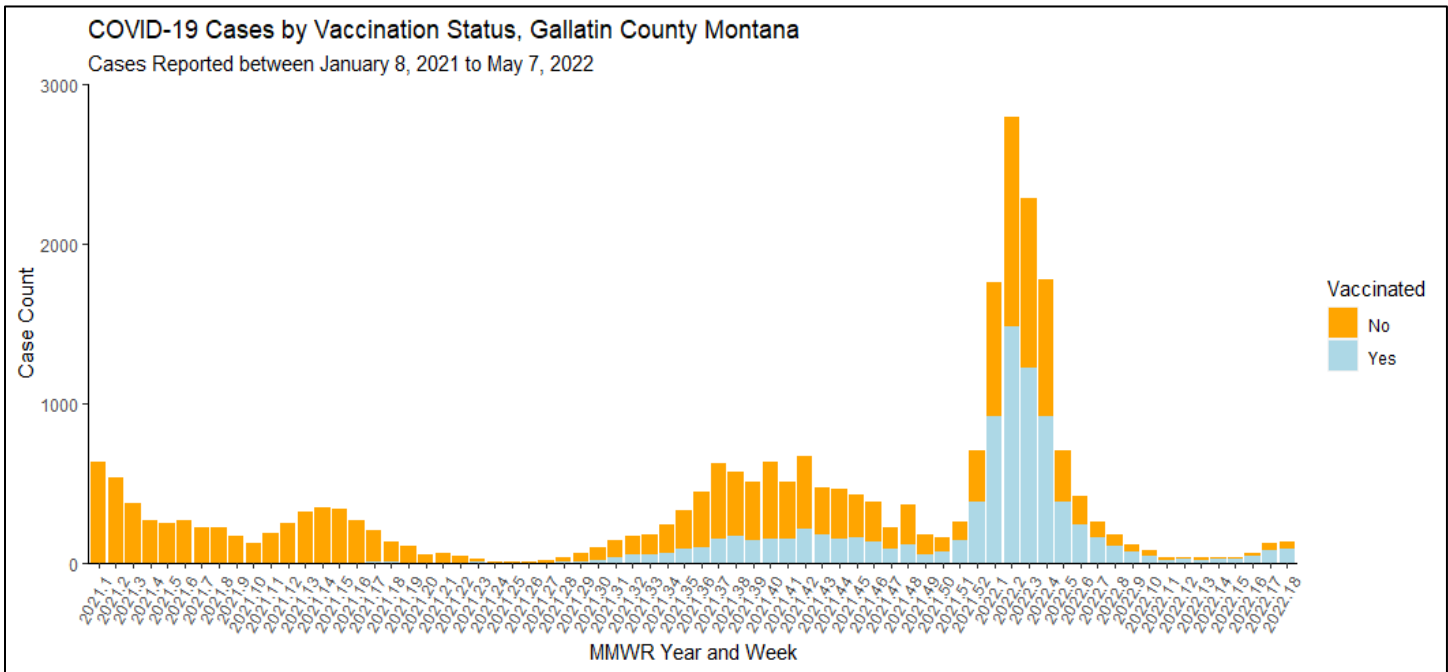


Figure 5. Describes the number of COVID-19 cases by vaccination status and [CDC MMWR Week](#) from January 8, 2021 to May 7, 2022. Light blue bars represent weekly cases counts among fully vaccinated Gallatin County residents and orange bars represent weekly cases counts among unvaccinated Gallatin County residents.

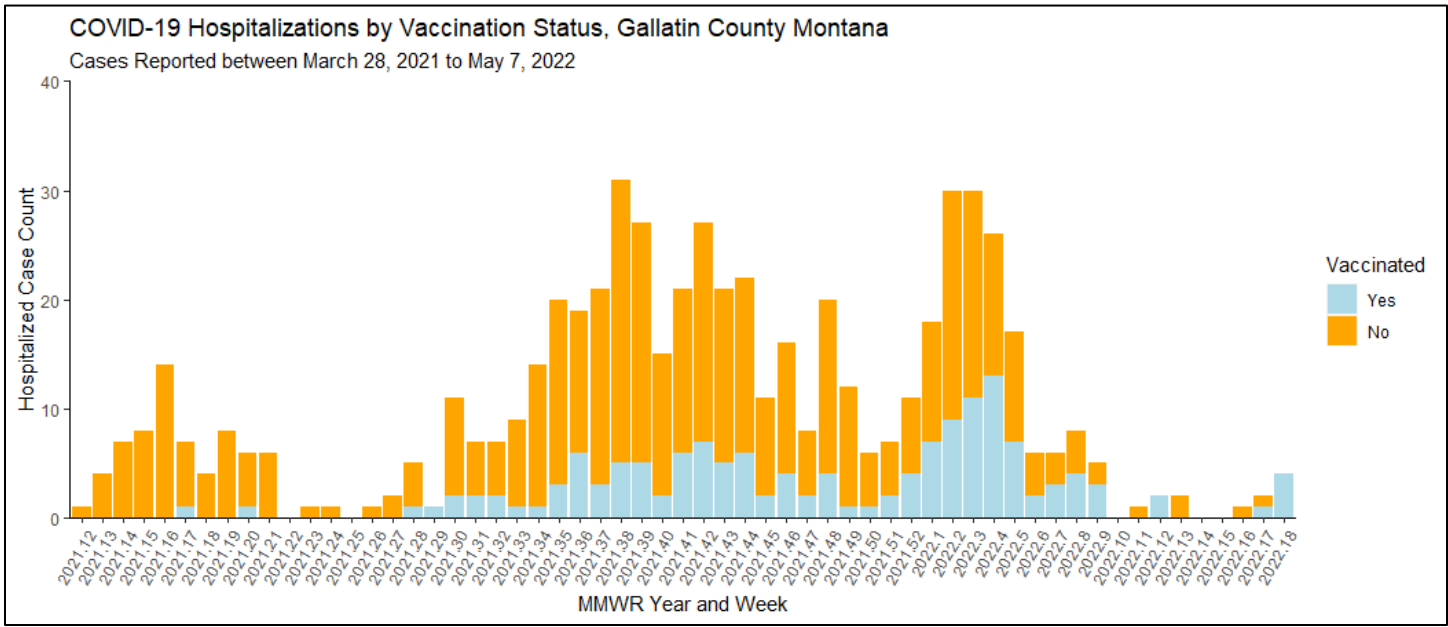


Figure 6. Describes the number of hospitalized COVID-19 cases by vaccination status and [CDC MMWR Week](#) from March 28, 2021 to May 7, 2022. Light blue bars represent weekly hospitalizations counts among fully vaccinated Gallatin County residents and orange bars represent weekly hospitalizations counts among unvaccinated Gallatin County residents.

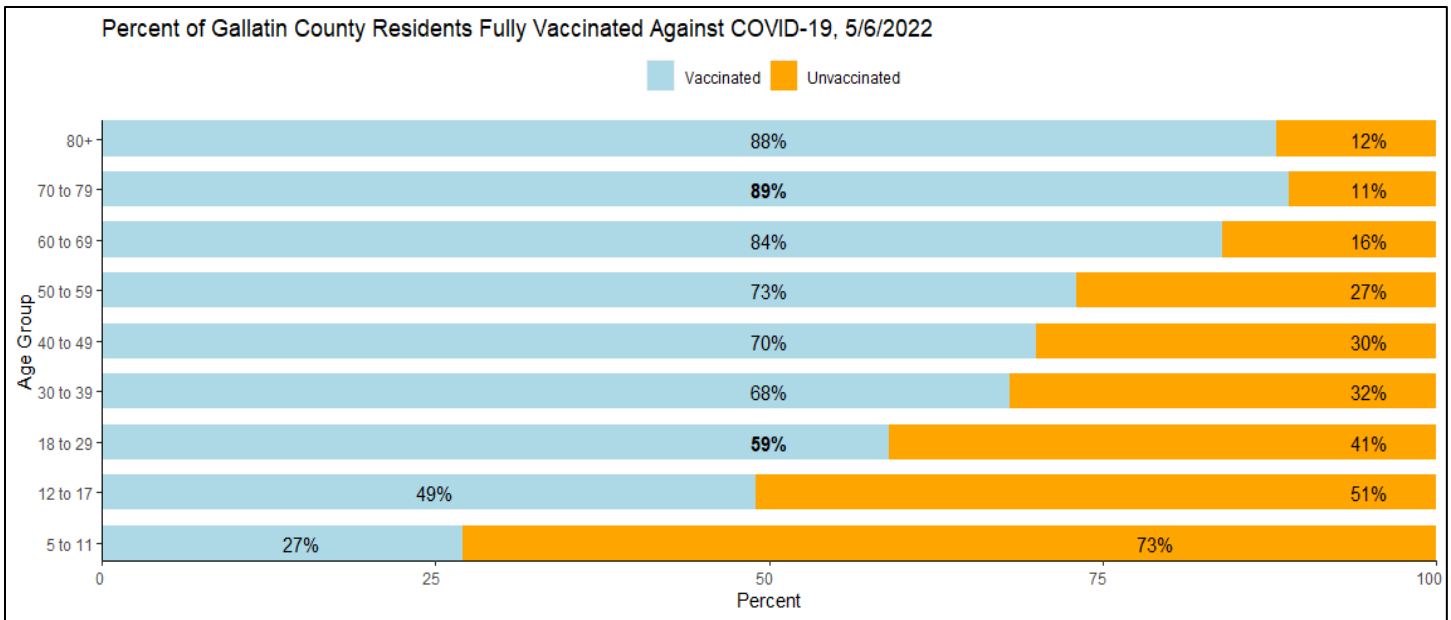


Figure 7. Describes the percentage of Gallatin County residents by age group who are fully vaccinated with a COVID-19 vaccine. Bolded values within blue bars indicate a percent increase from the previous week.

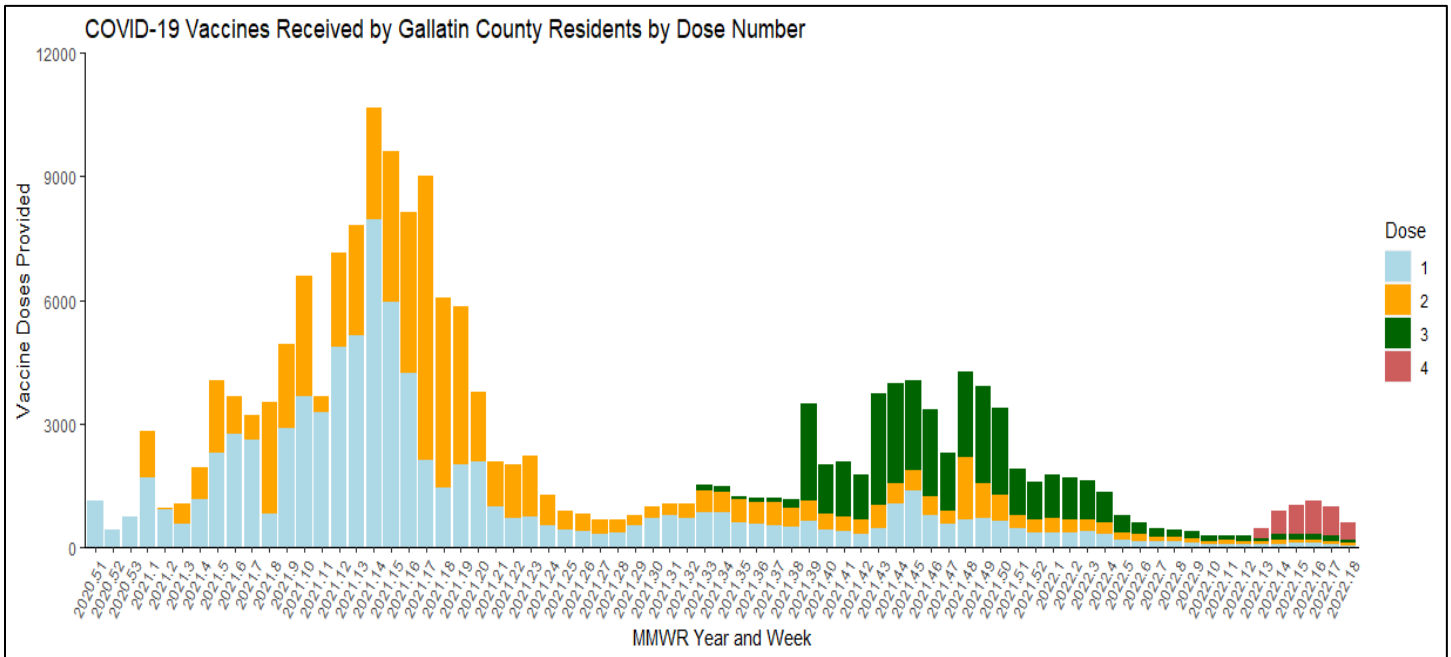


Figure 8. Describes COVID-19 vaccine doses received by Gallatin County residents by MMWR Year and Week as of May 6, 2022.

Table 1. Describes the number of deaths among Gallatin County residents that are attributable to COVID-19 as of 5/13/2022.

| | Total | Recent Week | Percent change from previous week |
|--------|-------|-------------|-----------------------------------|
| Deaths | 122 | 0 | 0 |

Table 2. Describes the number of active cases per 100,000 Gallatin County residents among Vaccine Eligible Age Groups as of 5/12/2022.

| Age Group | Number of Active Cases | Total Number of Residents | Active Cases per 100,000 |
|-----------|------------------------|---------------------------|--------------------------|
| 0 to 4 | 3 | 5906 | 51 |
| 5 to 11 | 10 | 9138 | 109 |
| 12 to 17 | 6 | 7,616 | 79 |
| 18 to 29 | 43 | 28,995 | 148 |
| 30 to 39 | 41 | 17,388 | 236 |
| 40 to 49 | 39 | 14,113 | 276 |
| 50 to 59 | 31 | 11,667 | 266 |
| 60 to 69 | 34 | 12,149 | 280 |
| 70 to 79 | 25 | 6,846 | 365 |
| 80+ | 31 | 2,968 | 1045 |

Table 3. Describes the community impact levels based on the number of new cases and COVID-19 hospital admissions in the last 7 days per 100,000 population and the average percent of staffed inpatient beds occupied by COVID-19 patients in the last 7 days. Gallatin County is currently experiencing “Low” community impact, as depicted by the black circle on the table below. Data regarding community levels and local indicators can be found at the CDC COVID Data Tracker [here](#). During periods of low impact the CDC recommends staying up-to-date with COVID-19 vaccines and boosters, maintaining improved ventilation throughout indoor spaces when possible, and following CDC guidelines for isolation and quarantine, including getting tested if you are exposed or have symptoms. Individuals who are immunocompromised or at high risk for severe disease should have a plan for rapid testing if needed and talk to their healthcare provider about whether they’re a candidate for treatments like oral antivirals or monoclonal antibodies.

| New COVID-19 Cases Per 100,000 people in the past 7 days | Indicators | Low | Medium | High |
|--|---|--------|------------|--------|
| | | | | |
| Fewer than 200 | New COVID-19 admissions per 100,000 population (7-day total) | <10.0 | 10.0-19.9 | ≥20.0 |
| | Percent of staffed inpatient beds occupied by COVID-19 patients (7-day average) | <10.0% | 10.0-14.9% | ≥15.0% |
| 200 or more | New COVID-19 admissions per 100,000 population (7-day total) | NA | <10.0 | ≥10.0 |
| | Percent of staffed inpatient beds occupied by COVID-19 patients (7-day average) | NA | <10.0% | ≥10.0% |



Please note the data contained in the report above are subject to change as more information regarding cases and lab tests become available through contact tracing or information sharing. GCCHD reserves the right to edit the format and content of the weekly surveillance report.