

Gallatin County Weekly COVID-19 Surveillance Report – July 29, 2022

As a supplement to the data provided on the [COVID-19 Dashboard](#), Gallatin City-County Health Department (GCCHD) will release this weekly surveillance report each Friday. The report includes additional epidemiologic data useful for understanding the current COVID-19 pandemic in Gallatin County, Montana.

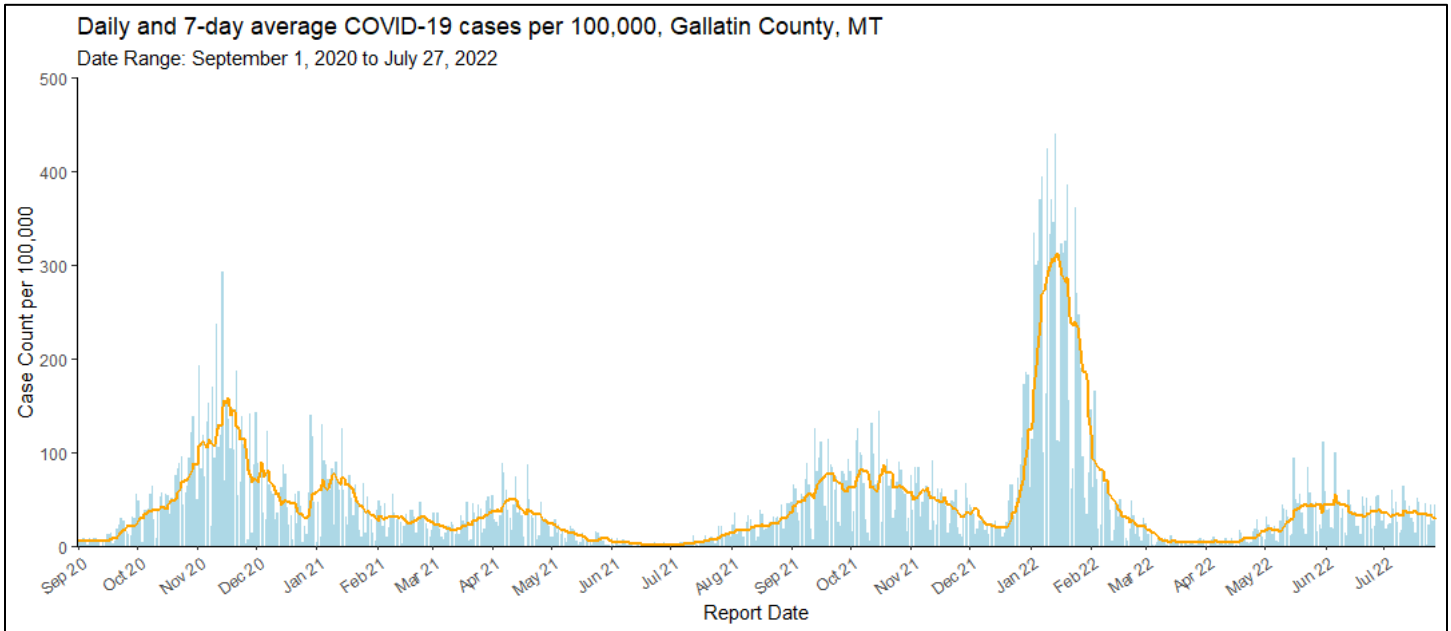


Figure 1. Describes the number of daily cases and 7-day rolling average of cases per 100,000 residents in Gallatin County. Blue bars indicate daily case reports per 100,000 residents and the orange line represents the 7-day rolling average of cases per 100,000 residents from 9/1/2020 to 7/27/2022. The 7-day rolling average of daily cases per 100,000 residents was 30.9 cases per 100,000 on 7/27/2022, a 10.69% decrease from 34.6 cases per 100,000 on 7/20/2022.

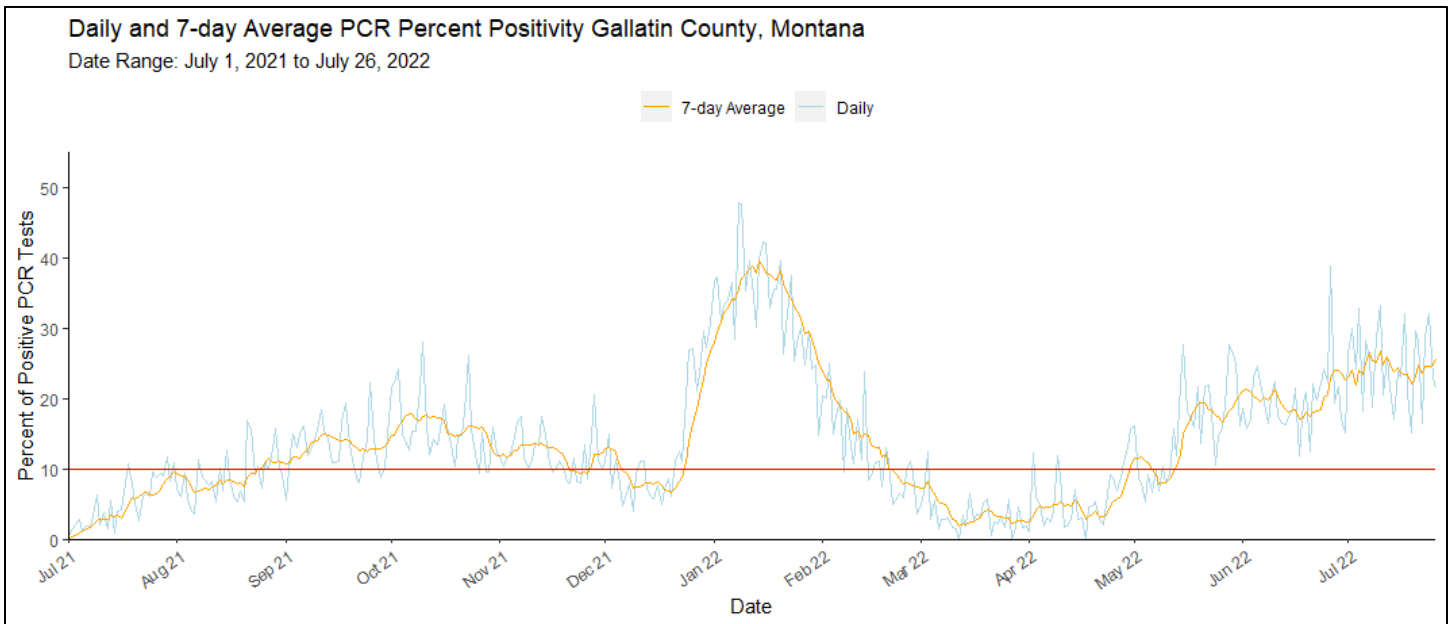


Figure 2. Describes the percent of positive PCR tests by day and a 7-day rolling average of the percent of positive tests. Public health experts say a positivity rate above 10% (red line) may mean more testing is necessary in order to avoid missing a significant number of cases in the community. The 7-day rolling average of percent positive was 25.5% on 7/26/2022, a 15.91% increase from the 22.0% positivity rate for the 7-day period that ended on 7/19/2022.

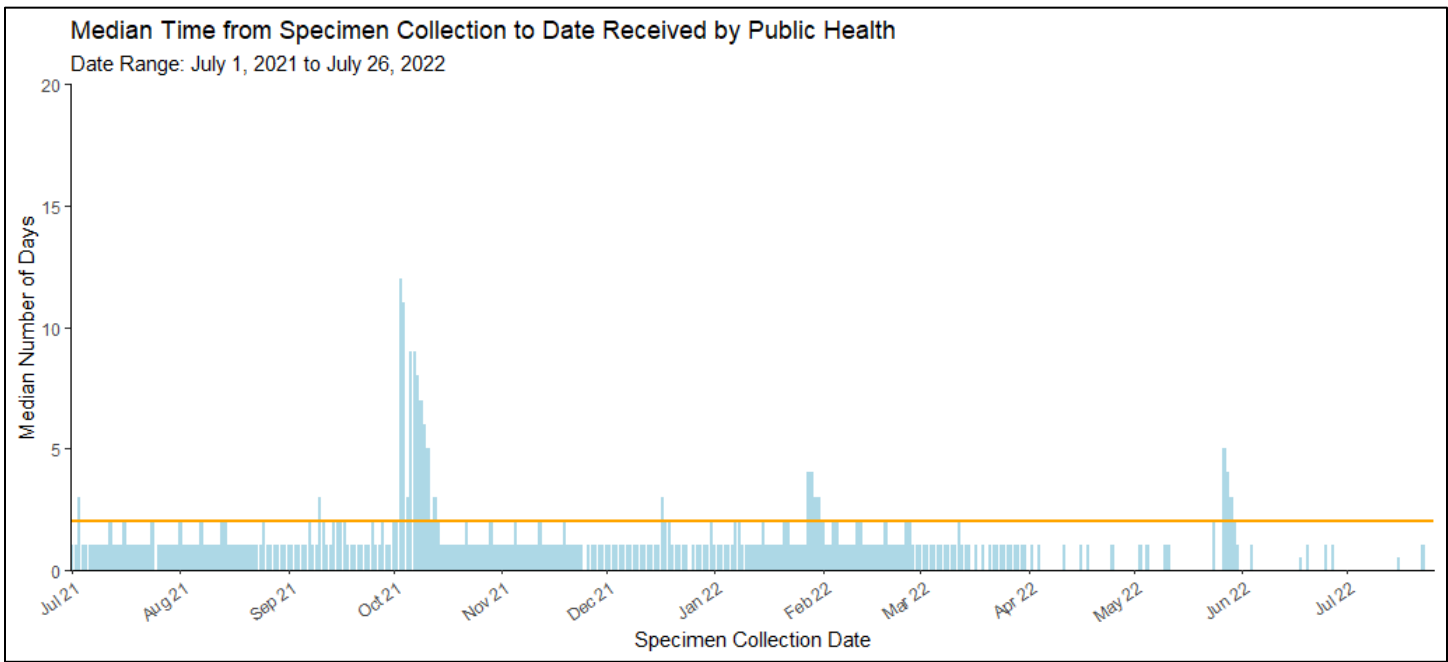


Figure 3. Describes the median number of days it takes a specimen collected until the result of the laboratory test is sent to GCCHD. The orange line in the figure above denotes 2 days. These data only include laboratory tests transmitted electronically via the Montana Infectious Disease Information System (MIDIS). Ideally, local health departments receive test results within 24-48 hours of specimen collection. Consistent delays greater than that make it more difficult to slow spread of the disease through isolation and quarantine. For cases reported during the period 12/28/2021 to 7/26/2022 the median time from specimen collection to report to public health was 1 day. Days with no blue bars indicate that the majority of test results were received on the same day that the tests were collected.

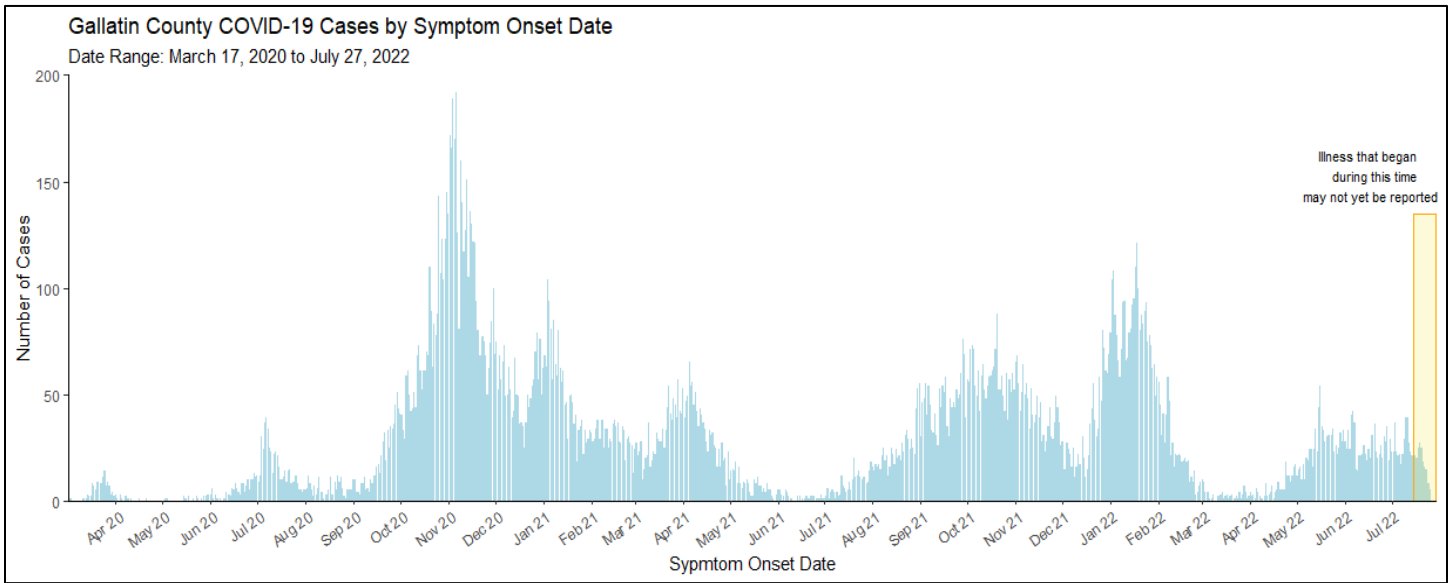


Figure 4. Epidemic curve of cases residing or recovering in Gallatin County at the time of COVID-19 diagnosis displayed by date of symptom onset. Data only includes cases with onset date information reported to GCCHD between 3/17/2020 to 7/27/2022. Onset date data may be unavailable because the COVID-19 case was asymptomatic, unable to determine when symptoms started, onset date is not yet reported or the case was not responsive to public health outreach.

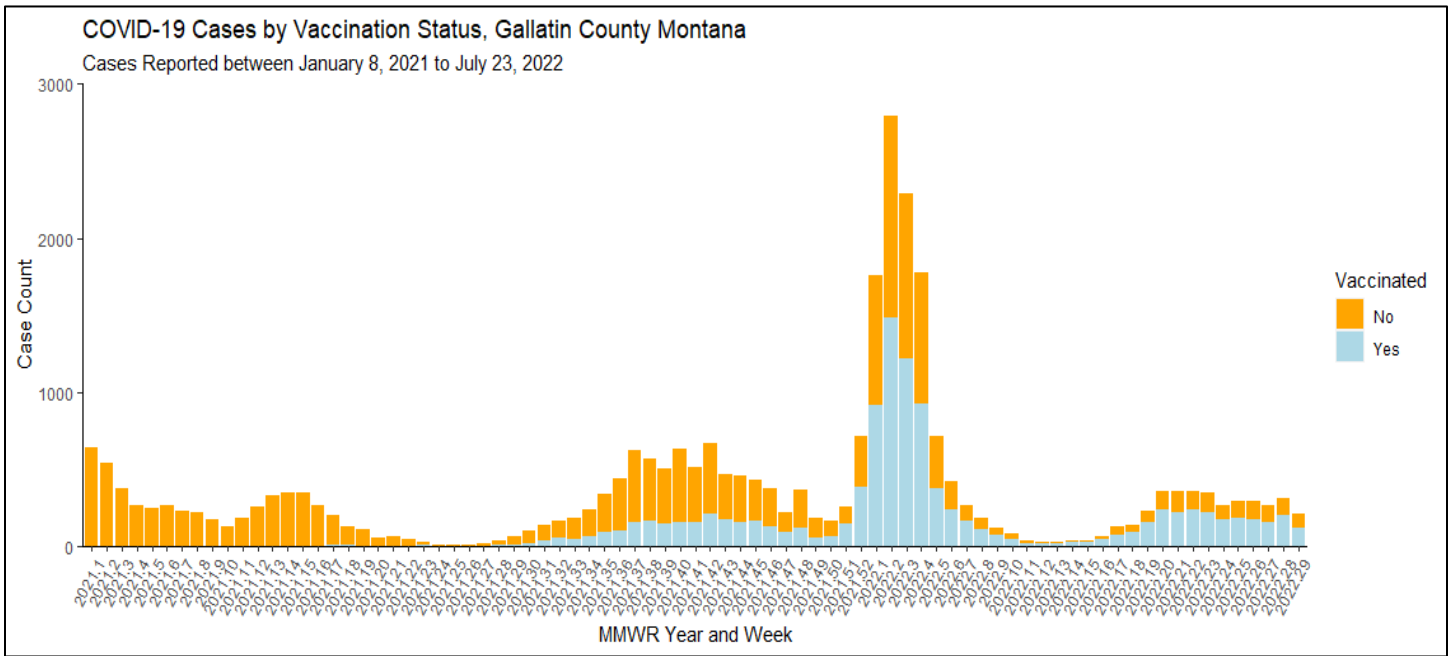


Figure 5. Describes the number of COVID-19 cases by vaccination status and [CDC MMWR Week](#) from January 8, 2021 to July 23, 2022. Light blue bars represent weekly cases counts among fully vaccinated Gallatin County residents and orange bars represent weekly cases counts among unvaccinated Gallatin County residents.

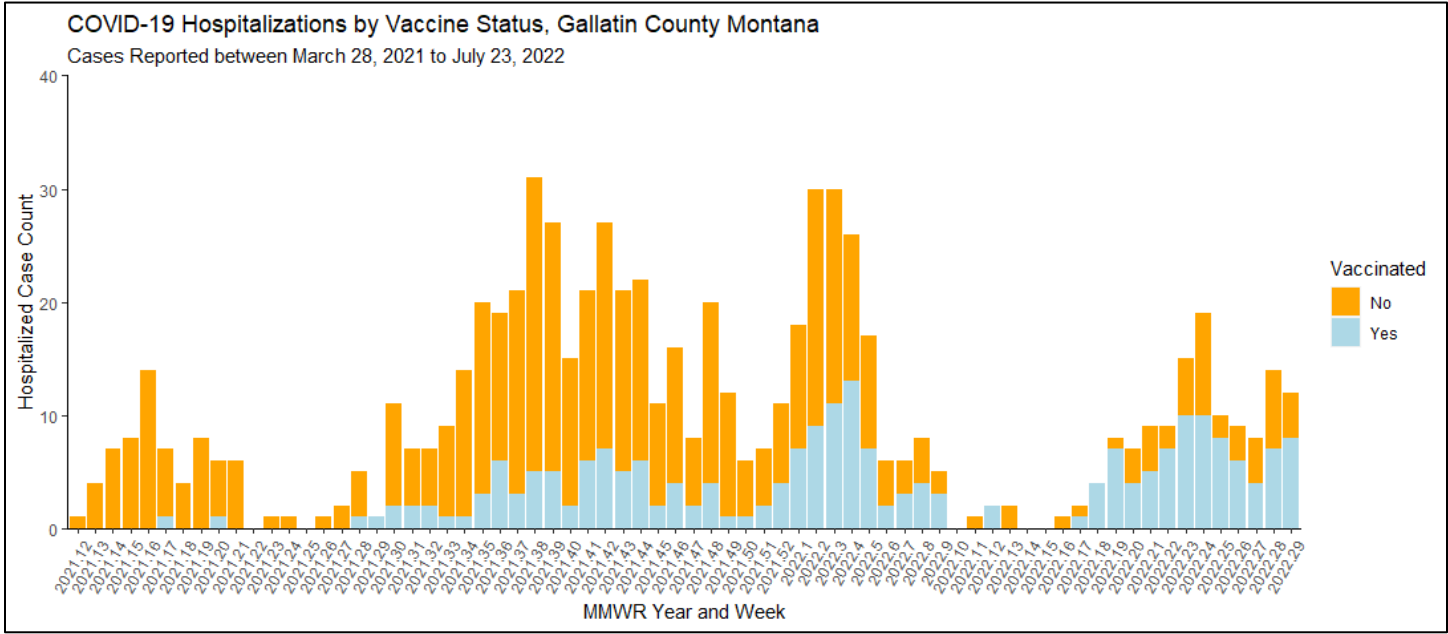


Figure 6. Describes the number of hospitalized COVID-19 cases by vaccination status and [CDC MMWR Week](#) from March 28, 2021 to July 23, 2022. Light blue bars represent weekly hospitalizations counts among fully vaccinated Gallatin County residents and orange bars represent weekly hospitalizations counts among unvaccinated Gallatin County residents.

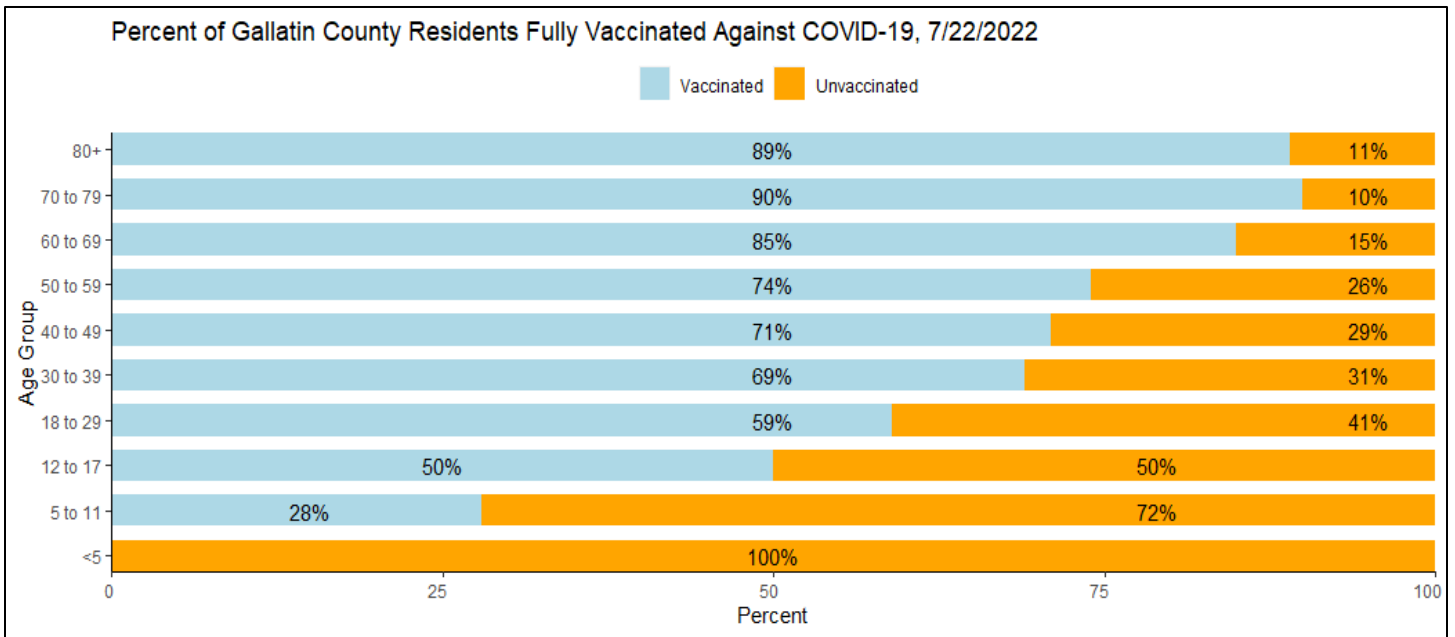


Figure 7. Describes the percentage of Gallatin County residents by age group who are fully vaccinated with a COVID-19 vaccine. Bolded values within blue bars indicate a percent increase from the previous week.

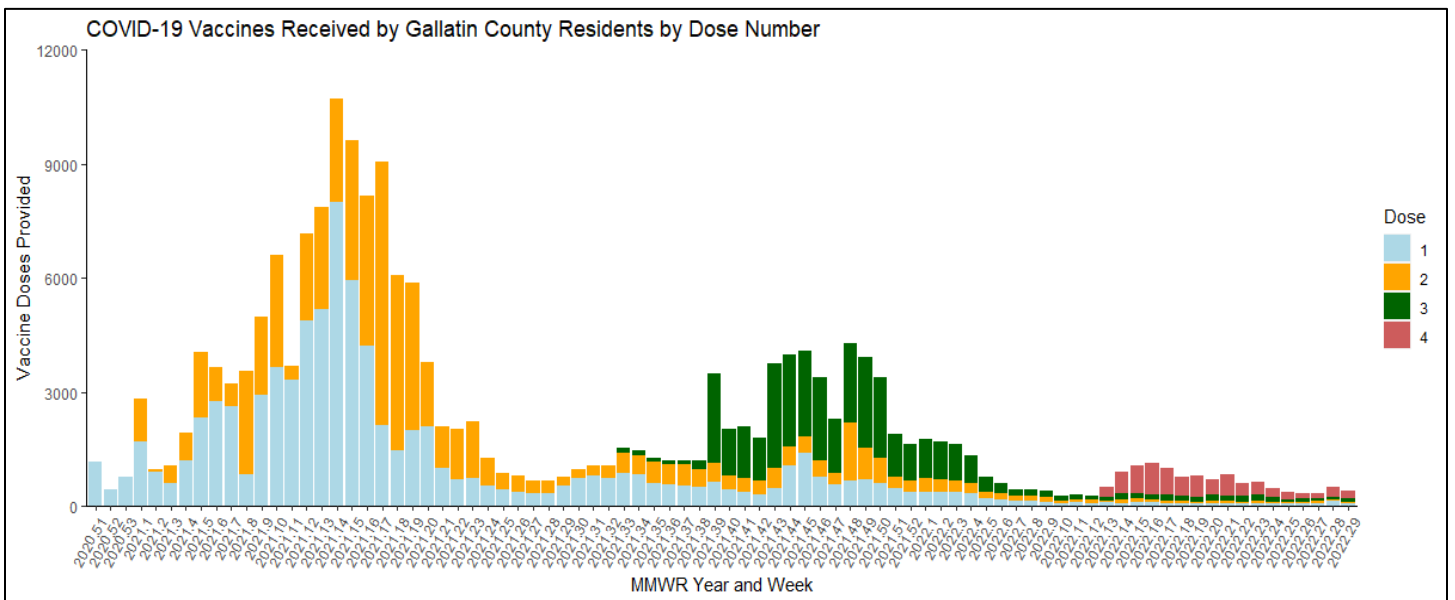


Figure 8. Describes COVID-19 vaccine doses received by Gallatin County residents by MMWR Year and Week as of July 22, 2022.

Table 1. Describes the number of deaths among Gallatin County residents that are attributable to COVID-19 as of 7/29/2022.

	Total	Recent Week	Percent change from previous week
Deaths	123	0	0

Table 2. Describes the number of active cases per 100,000 Gallatin County residents among Vaccine Eligible Age Groups as of 7/28/2022.

Age Group	Number of Active Cases	Total Number of Residents	Active Cases per 100,000
0 to 4	23	5906	389
5 to 11	10	9138	109
12 to 17	9	7,616	118
18 to 29	85	28,995	293
30 to 39	49	17,388	282
40 to 49	72	14,113	510
50 to 59	33	11,667	283
60 to 69	47	12,149	387
70 to 79	37	6,846	541
80+	30	2,968	1011

Table 3. Describes the community impact levels based on the number of new cases and COVID-19 hospital admissions in the last 7 days per 100,000 population and the average percent of staffed inpatient beds occupied by COVID-19 patients in the last 7 days. Gallatin County is currently experiencing “Medium” community impact, as depicted by the black circle on the table below. Data regarding community levels and local indicators can be found at the CDC COVID Data Tracker [here](#). During periods of medium impact the CDC recommends staying up-to-date with COVID-19 vaccines and boosters, maintaining improved ventilation throughout indoor spaces when possible, and following CDC guidelines for isolation and quarantine, including getting tested if you are exposed or have symptoms. Individuals who are at high risk for severe disease should talk to their healthcare provider about whether they should wear a mask and take other precautions like testing. Those who have a high risk household or social contact should consider testing before coming into contact with them and consider masking while indoors with them.

New COVID-19 Cases Per 100,000 people in the past 7 days	Indicators	Low	Medium	High
		Fewer than 200	New COVID-19 admissions per 100,000 population (7-day total) <10.0	10.0-19.9
200 or more	Percent of staffed inpatient beds occupied by COVID-19 patients (7-day average)	<10.0%	10.0-14.9%	≥15.0%
	New COVID-19 admissions per 100,000 population (7-day total)	NA	<10.0	≥10.0
	Percent of staffed inpatient beds occupied by COVID-19 patients (7-day average)	NA	<10.0%	≥10.0%



Please note the data contained in the report above are subject to change as more information regarding cases and lab tests become available through contact tracing or information sharing. GCCHD reserves the right to edit the format and content of the weekly surveillance report.