
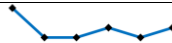







Gallatin County Weekly Communicable Disease Report

This report provides a weekly snapshot of communicable disease activity in Gallatin County. Data are provisional and are expected to change as more information is received. If you are seeking data that is not included in the report below, please submit a data request through HS@gallatin.mt.gov. The turnaround time depends on the complexity of the request and availability of our staff.

Table 1. Communicable diseases reported in Gallatin County* compared to statewide data during MMWR Week 34 (week ending August 26, 2023).

	Gallatin			State of Montana	
	Total (2023 Year-to-Date)	MMWR Week 34	Six-Week Trend Line	Total (2023 Year-to-Date)	MMWR Week 34
General Communicable Diseases					
COVID-19	1,691	61		13,547	458
Latent TB Infection (LTBI)	29	1		187	6
Enteric Diseases					
Campylobacteriosis	28	1		288	9
Cryptosporidiosis	12	1		78	1
Hepatitis					
Hepatitis C, Chronic	11	1		713	19
Sexually Transmitted Diseases					
Chlamydia	333	10		2,380	77
Other Conditions					
Animal Bites	181	5		Not Reported	

Data source: MTDPHHS Weekly Communicable Disease Epidemiology Report

*Not all cases were contracted in Gallatin County

Communicable Disease News:

- Additional summary of diseases reported in the state of Montana for MMWR Week 34:
 - **Enteric Diseases:** Giardiasis (4), Salmonellosis (8), Shiga toxin-producing *Escherichia coli* (STEC) (2)
 - **General Communicable Diseases:** Latent TB Infection (LTBI) (6)
 - **Heavy Metal Exposures:** Lead (5)
 - **Hepatitis:** Hepatitis B, chronic (2), Hepatitis C, chronic (19)
 - **STD/HIV:** Gonorrhea (17), Syphilis, primary or secondary (5), Syphilis, latent (3), HIV/AIDS (1)
 - **Vaccine Preventable Diseases:** *Streptococcus pneumoniae*, invasive (1), Varicella (1)
 - **Vector-Borne Diseases:** West Nile Virus, neuroinvasive (4), Tickborne Relapsing Fever (1), Lyme disease (2)
 - **Zoonoses:** Rabies, animal (1), Rabies, post-exposure prophylaxis (PEP) (8)

Gallatin City-County Communicable Disease Program

Hours: M-F 8:00AM-5:00PM: (406) 582-3100

After hours 24/7 line: (406) 582-2100 ext. 2, ask to page the Health Dept

www.healthygallatin.org

[Reportable Communicable Disease List](#)

Questions? Please Contact:

Gallatin County Weekly Communicable Disease Report

Expanded COVID-19 Data

During MMWR Week 35 (week ending 9/2/2023), 93 new COVID-19 cases were reported among Gallatin County residents. Due to recent changes made to the reporting requirements at the state-level, GCCHD can no longer report data on breakthrough status related to COVID-19 cases.

Table 2. Summary of COVID-19 activity among Gallatin County residents reported between 3/17/2020 to 9/2/2023.

	Total	MMWR Week 35	% Change from Previous Week
Reported Cases	42,743	93	+52.46%
Hospitalizations	1,601	0	NA*
Deaths	136	0	NA*

*percent change is incalculable when the previous value is zero.

Table 3. Describes the number of active cases by age group per 100,000 residents as of 9/4/2023.

Age Group	Number of Active Cases	Total Number of Residents	Active Cases per 100,000
0 to 4	3	5,906	51
5 to 11	1	9,138	11
12 to 17	2	7,616	26
18 to 29	8	28,995	28
30 to 39	5	17,388	29
40 to 49	3	14,113	21
50 to 59	11	11,667	94
60 to 69	13	12,149	107
70 to 79	12	6,846	175
80+	5	2,968	168

Table 4. Describes CDC COVID-19 hospital admission levels as of 9/5/2023, established to guide recommended preventative actions based on healthcare system strain. Gallatin County is currently experiencing “Low” level, in which CDC recommends staying up to date with COVID-19 vaccines and boosters, maintaining improved ventilation throughout indoor spaces when possible, and following CDC guidelines for isolation and quarantine, including testing if you are exposed or have symptoms. Individuals who are at high risk for severe disease should have a plan for rapid testing if needed and talk to their healthcare provider about whether they are a candidate for treatments like oral antivirals or monoclonal antibodies.

Indicator	Low	Medium	High
New COVID-19 admissions per 100,000 (7-day total)	<10.0	10.0 – 19.9	≥20.0

Questions? Please Contact:

Gallatin City-County Communicable Disease Program

Hours: M-F 8:00AM-5:00PM: (406) 582-3100

After hours 24/7 line: (406) 582-2100 ext. 2, ask to page the Health Dept

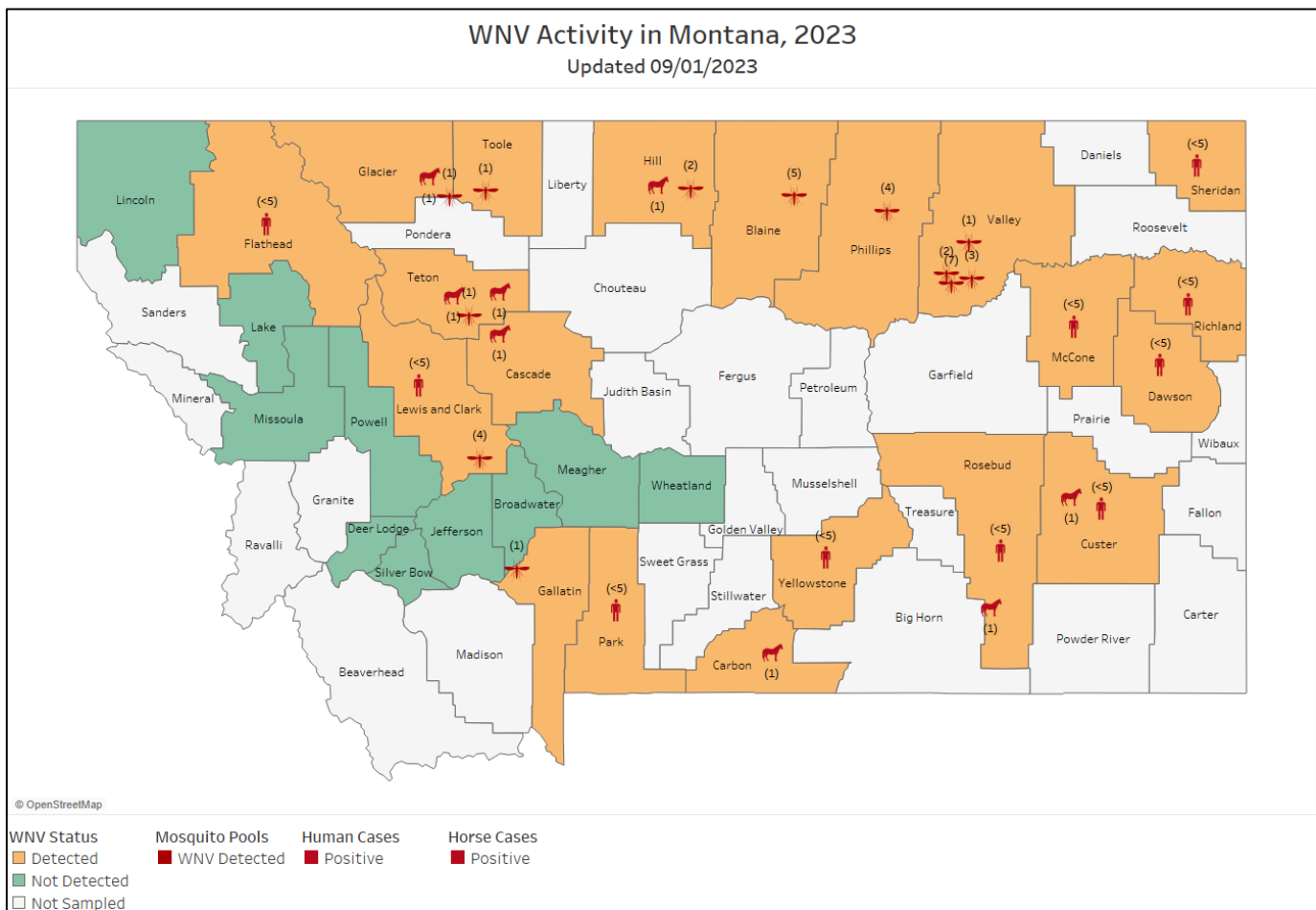
www.healthygallatin.org

[Reportable Communicable Disease List](#)

Gallatin County Weekly Communicable Disease Report

- West Nile Virus (WNV) Activity Increasing in Montana**

- As of 9/2/2023 Montana has WNV activity has been reported in 20 different counties (highlighted orange on the map below). DPHHS has reported 15 human cases of WNV this season. Of the cases, 8 have been classified as neuroinvasive, 4 as non-neuroinvasive, and 3 as asymptomatic. Additionally, 8 cases of WNV have been reported in horses by the Department of Livestock. Nationally, as of 8/29/2023, 455 cases of WNV (315 neuroinvasive, 140 non-neuroinvasive) have been confirmed in 36 states. Thirty-three (33) deaths across the U.S. have been attributed to WNV. For more information about WNV protection and surveillance activities, contact GCCHD at 406-582-3100 or visit the [DPHHS WNV webpage](#).



Gallatin City-County Communicable Disease Program

Hours: M-F 8:00AM-5:00PM: (406) 582-3100

After hours 24/7 line: (406) 582-2100 ext. 2, ask to page the Health Dept

www.healthygallatin.org

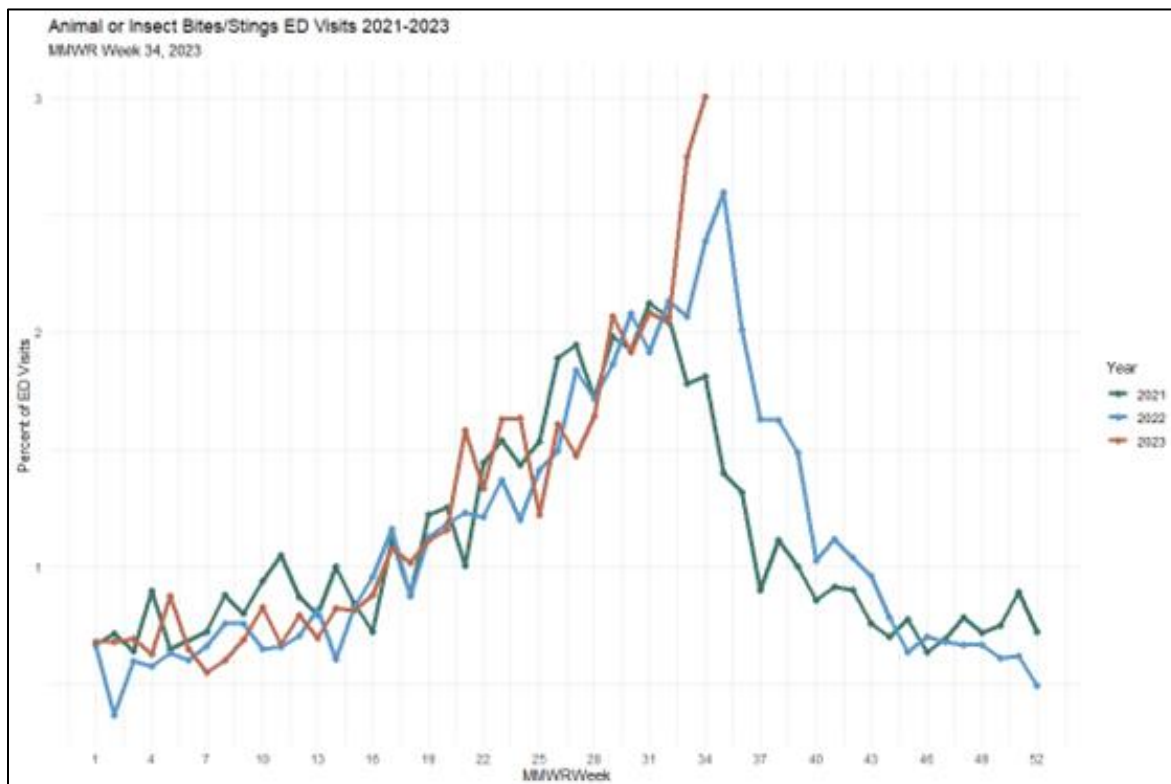
[Reportable Communicable Disease List](#)

Questions? Please Contact:

Gallatin County Weekly Communicable Disease Report

- **Syndromic Surveillance – Animal or Insect Bites/Stings in Montana**

- Animal or Insect Bites/Stings-related ED visits accounted for 3% (199 out of 6623) of total ED visits during MMWR Week 34 in 2023 (August 20 - August 26) which is a 0.3% increase from the previous week. In 2022, animal or insect bites/stings-related ED visits made up 2.4% (169 out of 7072) of the total ED visits during MMWR Week 34. Over the past five weeks, the mean percentage of animal or insect bites/stings visits in 2023 was not statistically significantly different from the percentage for the same period in 2022. The preliminary rate for MMWR Week 35, 2023 (August 27 - September 02) is 2.4% (87 out of 3616). The map shows the crude rates of animal or insect bites/stings-related ED visits in each of the counties for MMWR Week 34, 2023. While most hospital facilities participate in syndromic surveillance, not all do. The chart represents only reported data; true numbers may vary.



Questions? Please Contact:

Gallatin City-County Communicable Disease Program

Hours: M-F 8:00AM-5:00PM: (406) 582-3100

After hours 24/7 line: (406) 582-2100 ext. 2, ask to page the Health Dept

www.healthygallatin.org

[Reportable Communicable Disease List](#)