
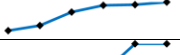


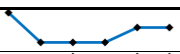


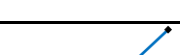
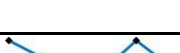


Gallatin County Weekly Communicable Disease Report

This report provides a weekly snapshot of communicable disease activity in Gallatin County. Data are provisional and are expected to change as more information is received. If you are seeking data that is not included in the report below, please submit a data request through HS@gallatin.mt.gov. The turnaround time depends on the complexity of the request and availability of our staff.

Table 1. Communicable diseases reported in Gallatin County* compared to statewide data during MMWR Week 49 (week ending December 9, 2023).

	Gallatin County			State of Montana	
	Total (2023 Year-to-Date)	MMWR Week 49	Six-Week Trend Line	Total (2023 Year-to-Date)	MMWR Week 49
Influenza (2023-2024 Season)**					
Influenza A	97	41		1,259	433
Influenza B	137	35			
Hospitalizations or Deaths	5	1		71	21
General Communicable Diseases					
COVID-19	2,900	48		24,485	400
Enteric Diseases					
Campylobacteriosis	40	1		421	4
Salmonellosis	16	1		169	3
Sexually Transmitted Diseases					
Chlamydia	507	4		3,484	59
Vaccine Preventable Diseases					
Pertussis	3	1		41	2
Other Conditions					
Animal Bites	245	2		Not Reported	

Data source: MTDPHHS Weekly Communicable Disease Epidemiology Report

*Not all cases were contracted in Gallatin County

**Statewide disaggregated influenza data is unavailable.

Communicable Disease News:

- Additional summary of diseases reported in the state of Montana for MMWR Week 49:
 - **Enteric Diseases:** Cryptosporidiosis (1), Shiga toxin-producing *Escherichia coli* (STEC) (3)
 - **General Communicable Diseases:** Latent TB Infection (LTBI) (2), Legionellosis (1)
 - **Hepatitis:** Hepatitis B, chronic (1), Hepatitis C, chronic (12)
 - **Metal Exposures:** Lead (1)
 - **STD/HIV:** Gonorrhea (14), Syphilis, primary and secondary (3), Syphilis, latent (2)
 - **Vaccine Preventable Diseases:** *Streptococcus pneumoniae*, invasive (1)
 - **Zoonotic:** Rabies, post-exposure prophylaxis (PEP) (2)

Gallatin City-County Communicable Disease Program

Hours: M-F 8:00AM-5:00PM: (406) 582-3100

After hours 24/7 line: (406) 582-2100 ext. 2, ask to page the Health Dept

www.healthygallatin.org

[Reportable Communicable Disease List](#)

Questions? Please Contact:

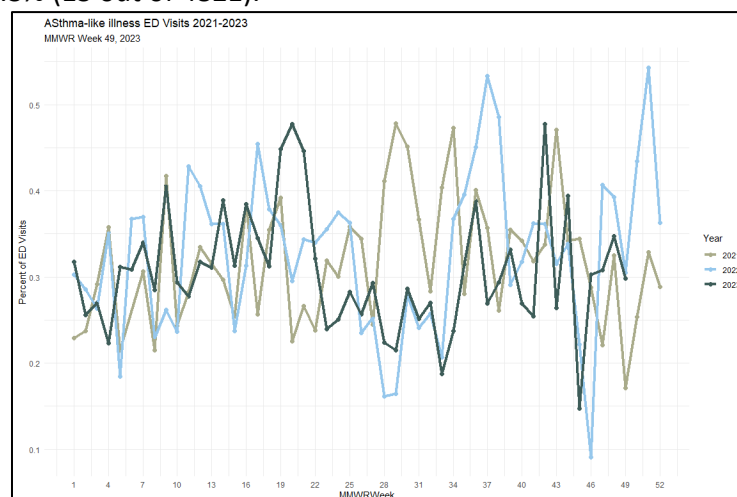
Gallatin County Weekly Communicable Disease Report

- Statewide Influenza Summary for MMWR Week 49: Activity is REGIONAL**

- Influenza activity is rapidly increasing for the 2023-2024 influenza season in Montana. 433 cases of influenza were reported during MMWR week 49.
- Season to date, 1,259 cases, 67 hospitalizations, and 4 deaths have been associated with influenza. Most flu cases have been reported in the Western and Central regions of Montana.
- During week 49, 1,242 specimens were tested for influenza at partner surveillance laboratories and 133 (10.7%) were positive.
- Influenza A (68%) and B (32%) are both circulating in Montana. Among 106 influenza A specimens subtyped this season, 74% are H1N1 and 26% are H3.
- Emergency department visits due to influenza-like illness (ILI) in M remained low at 1.78%.
- During week 49, 503 specimens were tested for RSV at partner surveillance laboratories and 21 (4.18%) were positive.
- This is the first week that influenza and RSV testing reached the percent positivity thresholds needed to declare statewide influenza circulation (>10% positivity) and seasonal RSV circulation (> 3% positivity). Two consecutive weeks with elevated percent positivity are required for DPHHS to declare the onset of statewide influenza circulation or seasonal RSV circulation

- Montana DPHHS Syndromic Surveillance: Asthma- and Pneumonia-like illnesses**

- Below are data reported from the Montana Syndromic Surveillance system. These data capture real-time changes in the percentage of emergency department (ED) visits related to asthma-like illness and pneumonia-like illness symptoms across the state and are monitored for significant increases. While most hospital facilities participate in syndromic surveillance, not all do. The charts represent only reported data; true numbers may vary. For questions on the data, or inquiries about facilities reporting in your jurisdiction, please contact Vanessa Whattam at 406-439-5324 or vanessa.whattam@mt.gov.
- Asthma-like illness-related ED visits accounted for 0.3% (21 out of 7036) of total ED visits during MMWR Week 49 in 2023 (December 03 - December 09) which is 0.05% decreased from the previous week. In 2022, asthma-like illness-related ED visits made up 0.3% (23 out of 7543) of the total ED visits during MMWR Week 49. Over the past five weeks, the mean percentage of asthma-like illness visits in 2023 is not statistically significantly different from the percentage for the same period in 2022. The preliminary rate for MMWR Week 50, 2023 (December 10 - December 16) is 0.3% (13 out of 4821).



Gallatin City-County Communicable Disease Program

Hours: M-F 8:00AM-5:00PM: (406) 582-3100

After hours 24/7 line: (406) 582-2100 ext. 2, ask to page the Health Dept

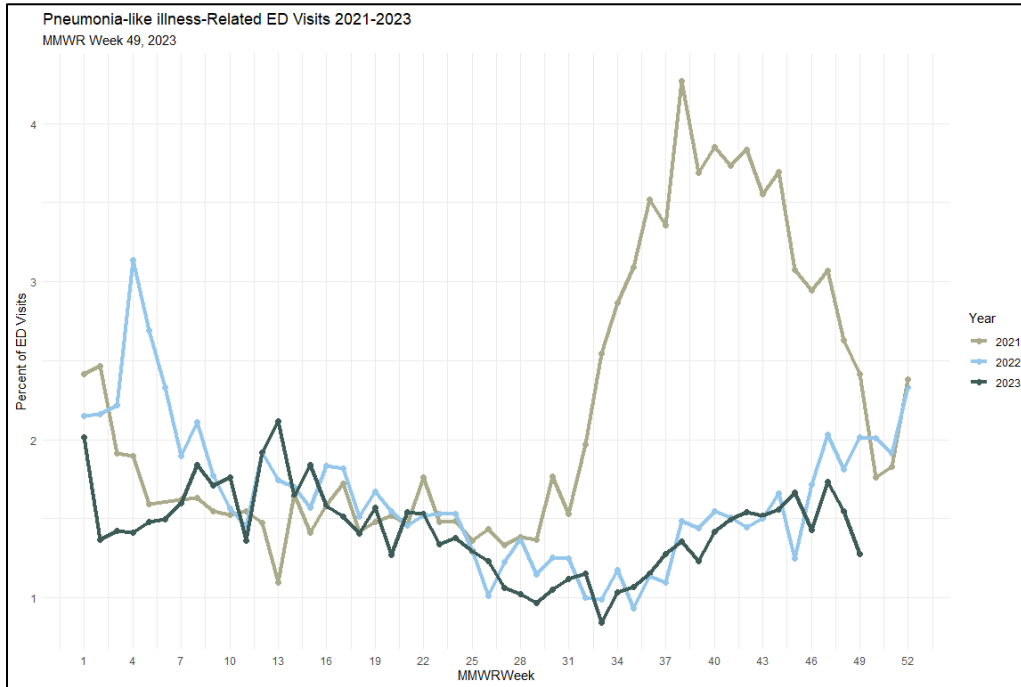
www.healthygallatin.org

[Reportable Communicable Disease List](#)

Questions? Please Contact:

Gallatin County Weekly Communicable Disease Report

- Pneumonia-like illness-related ED visits accounted for 1.3% (90 out of 7036) of total ED visits during MMWR Week 49 in 2023 (December 03 - December 09) which is 0.2% decreased from the previous week. In 2022, pneumonia-like illness-related ED visits made up 2% (152 out of 7543) of the total ED visits during MMWR Week 49. Over the past five weeks, the mean percentage of pneumonia-like illness visits in 2023 is not statistically significantly different from the percentage for the same period in 2022. The preliminary rate for MMWR Week 50, 2023 (December 10 - December 16) is 0.8% (38 out of 4821).



Questions? Please Contact:

Gallatin City-County Communicable Disease Program

Hours: M-F 8:00AM-5:00PM: (406) 582-3100

After hours 24/7 line: (406) 582-2100 ext. 2, ask to page the Health Dept

www.healthygallatin.org

[Reportable Communicable Disease List](#)