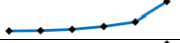
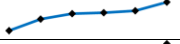









## Gallatin County Weekly Communicable Disease Report

This report provides a weekly snapshot of communicable disease activity in Gallatin County. Data are provisional and are expected to change as more information is received. If you are seeking data that is not included in the report below, please submit a data request through [HS@gallatin.mt.gov](mailto:HS@gallatin.mt.gov). The turnaround time depends on the complexity of the request and availability of our staff.

**Table 1.** Communicable diseases reported in Gallatin County\* compared to statewide data during MMWR Week 50 (week ending December 16, 2023).

	Gallatin County			State of Montana	
	Total (2023 Year-to-Date)	MMWR Week 50	Six-Week Trend Line	Total (2023 Year-to-Date)	MMWR Week 50
<b>Influenza (2023-2024 Season)**</b>					
Influenza A	219	122		2,138	873
Influenza B	184	47			
Hospitalizations or Deaths	7	2		118	46
<b>General Communicable Diseases</b>					
COVID-19	2,956	56		25,167	654
<i>Streptococcus Pneumoniae</i> , Invasive	8	1		103	4
<b>Hepatitis</b>					
Hepatitis C, Chronic	22	2		1,010	25
<b>Sexually Transmitted Diseases</b>					
Chlamydia	519	11		3,555	68
<b>Vaccine Preventable Diseases</b>					
Pertussis	4	1		44	3
<b>Other Conditions</b>					
Animal Bites	249	4		Not Reported	

Data source: MTPHHS Weekly Communicable Disease Epidemiology Report

\*Not all cases were contracted in Gallatin County

\*\*Statewide disaggregated influenza data is unavailable.

### Communicable Disease News:

- Additional summary of diseases reported in the state of Montana for MMWR Week 50:
  - **Enteric Diseases:** Campylobacteriosis (3), Cryptosporidiosis (2), Salmonellosis (3), Shiga toxin-producing *Escherichia coli* (STEC) (2)
  - **General Communicable Diseases:** Latent TB Infection (LTBI) (2)
  - **Metal Exposures:** Lead (4)
  - **STD/HIV:** Gonorrhea (5), HIV/AIDS (1), Syphilis, primary and secondary (2), Syphilis, latent (9)

Gallatin City-County Communicable Disease Program

Hours: M-F 8:00AM-5:00PM: (406) 582-3100

After hours 24/7 line: (406) 582-2100 ext. 2, ask to page the Health Dept

[www.healthygallatin.org](http://www.healthygallatin.org)

[Reportable Communicable Disease List](#)

**Questions? Please Contact:**

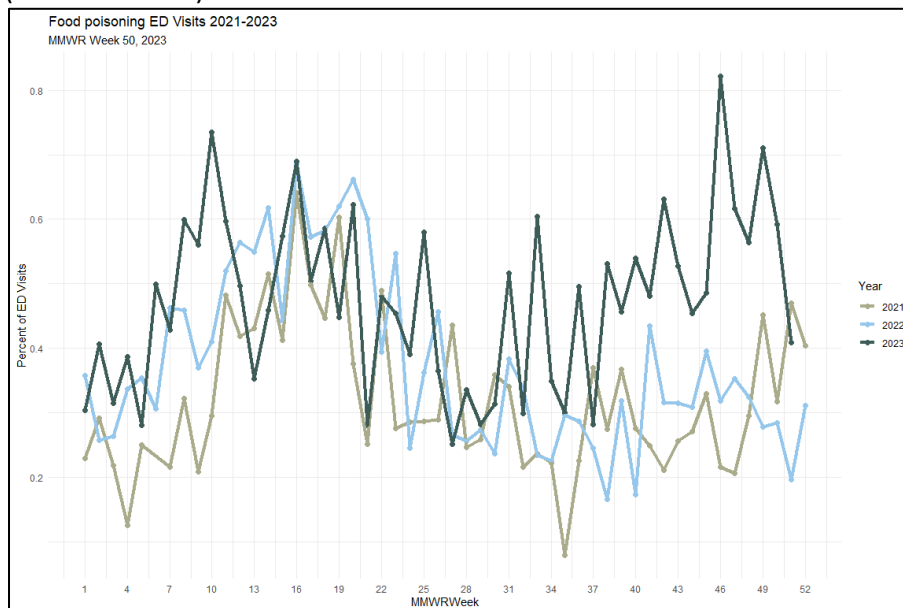
## Gallatin County Weekly Communicable Disease Report

- Statewide Influenza Summary for MMWR Week 50: Activity is WIDESPREAD**

- Influenza activity is rapidly increasing for the 2023-2024 influenza season in Montana. 873 cases of influenza were reported during MMWR week 50.
- Season to date, 2,138 cases, 113 hospitalizations, and 5 deaths have been associated with influenza. Over 90% of total reported flu cases have been reported in the Western and Central regions of Montana.
- During week 50, 959 specimens were tested for influenza at partner surveillance laboratories and 155 (16.16%) were positive.
- Influenza A is currently the dominant influenza type circulating in Montana – Flu A seasonal subtype H1N1 (n=105), H3N2 (n=41) and flu B (n=163) have been detected.
- Emergency department visits due to influenza-like illness (ILI) in Montana increased to 2.45%.
- During week 50, 510 specimens were tested for RSV at partner surveillance laboratories and 29 (5.69%) were positive.

- Montana DPHHS Syndromic Surveillance: Food Poisoning**

- Below are data reported from the Montana Syndromic Surveillance system. These data capture real-time changes in the percentage of emergency department (ED) visits related to food poisoning symptoms across the state and are monitored for significant increases. While most hospital facilities participate in syndromic surveillance, not all do. The chart represents only reported data; true numbers may vary. For questions on the data, or inquiries about facilities reporting in your jurisdiction, please contact Vanessa Whattam at 406-439-5324 or [vanessa.whattam@mt.gov](mailto:vanessa.whattam@mt.gov).
- Food poisoning-related ED visits accounted for 0.6% (42 out of 7095) of total ED visits during MMWR Week 50 in 2023 (December 10 - December 16) which is 0.1% decreased from the previous week. In 2022, food poisoning-related ED visits made up 0.3% (21 out of 7375) of the total ED visits during MMWR Week 50. Over the past five weeks, the mean percentage of food poisoning visits in 2023 is statistically significantly different from the percentage for the same period in 2022. The preliminary rate for MMWR Week 51, 2023 (December 17 - December 23) is 0.4% (21 out of 5129).



Gallatin City-County Communicable Disease Program

Hours: M-F 8:00AM-5:00PM: (406) 582-3100

After hours 24/7 line: (406) 582-2100 ext. 2, ask to page the Health Dept

[www.healthygallatin.org](http://www.healthygallatin.org)

[Reportable Communicable Disease List](#)

**Questions? Please Contact:**