









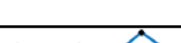
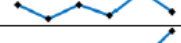


Gallatin County Weekly Communicable Disease Report

This report provides a weekly snapshot of communicable disease activity in Gallatin County. Data are provisional and are expected to change as more information is received. If you are seeking data that is not included in the report below, please submit a data request through HS@gallatin.mt.gov. The turnaround time depends on the complexity of the request and availability of our staff.

Table 1. Communicable diseases reported in Gallatin County* compared to statewide data during MMWR Week 13 (week ending March 30, 2024).

	Gallatin County			State of Montana	
	Total (2024 Year-to-Date)	MMWR Week 13	Six-Week Trend Line	Total (2024 Year-to-Date)	MMWR Week 13
Influenza (2023-2024 Season)**					
Influenza A	1,603	19		19,113	298
Influenza B	745	14			
Hospitalizations or Deaths	76	2			
General Communicable Diseases					
COVID-19	641	8		5,721	218
Latent TB Infection (LTBI)	3	1		16	3
<i>Streptococcus Pneumoniae</i> , Invasive	3	1		44	4
Enteric Diseases					
Giardiasis	4	1		26	2
Salmonellosis	8	1		27	3
Sexually Transmitted Diseases					
Chlamydia	135	9		836	51
Gonorrhea	10	2		177	10
Other Conditions					
Animal Bites	53	3		Not Reported	
Elevated Blood Lead	2	1		65	4

Data source: MTDPHHS Weekly Communicable Disease Epidemiology Report

*Not all cases were contracted in Gallatin County.

**Statewide disaggregated influenza data is unavailable.

Communicable Disease News:

- Additional summary of diseases reported in the state of Montana for MMWR Week 13:
 - **Enteric Diseases:** Campylobacteriosis (4), Shigellosis (2)
 - **General Communicable Diseases:** Coccidioidomycosis (2), Streptococcal toxic-shock syndrome (1)
 - **Heavy Metal Exposures:** Lead (4)
 - **Hepatitis:** Hepatitis C, chronic (19)
 - **STD/HIV:** HIV/AIDS (1), Syphilis, latent (16), Syphilis, primary or secondary (4)
 - **Vaccine Preventable Diseases:** *Haemophilus influenzae*, invasive (1)

Gallatin City-County Communicable Disease Program

Hours: M-F 8:00AM-5:00PM: (406) 582-3100

After hours 24/7 line: (406) 582-2100 ext. 2, ask to page the Health Dept

Questions? Please Contact:

www.healthygallatin.org

[Reportable Communicable Disease List](#)

Gallatin County Weekly Communicable Disease Report

Statewide Influenza & RSV Summary for MMWR Week 13: Activity is REGIONAL

- Influenza activity is **rapidly declining** for the 2023-2024 influenza season in Montana. 298 cases of influenza were reported during MMWR week 13.
- Season to date, 19,113 cases, 884 hospitalizations, and 42 deaths have been associated with influenza. 98% of counties have reported at least one case of influenza this season.
- Four facilities in Montana are currently responding to outbreaks of influenza. An outbreak of influenza indicates that there is evidence of active transmission between employees, patients, residents, and/or students of a congregate setting. A total of 39 outbreaks of influenza have been identified in congregate settings season-to-date.
- During week 13, 915 specimens were tested for influenza at partner surveillance laboratories and 73 (7.98%) were positive.
- Partner surveillance laboratories have tested 34,103 specimens for influenza since October 1, 2023. Out of 34,103 specimens, 5,548 (16.27%) have tested positive for influenza. Influenza A is currently the dominant influenza type circulating in Montana – Flu A seasonal subtype H1N1 (n=297), H3N2 (n=233), and flu B (n=1,655) have been detected.
- Emergency department (ED) visits due to influenza-like illness (ILI) in Montana increased to 1.70%. This is below Montana's baseline of 3.20%. Crossing above the baseline indicates an above-average number of patients being seen for ILI in EDs.
- During week 13, 401 specimens were tested for RSV at partner surveillance laboratories and 31 (7.73%) were positive.
- **[CDC Measles Health Alert Network Message – 3/19/2024](#)**
 - Measles is a highly contagious vaccine-preventable illness that remains a public health concern. Cases of measles are on the rise both globally and domestically. Since December 2023, the U.S. has seen a sharp increase in cases related to unvaccinated travelers exposed while abroad who becoming symptomatic after returning home. This can lead to an outbreak if unvaccinated persons are exposed.
 - As of April 5, 2024, there have been no confirmed cases of measles in Montana. However, there have been 113 confirmed cases of measles in 17 states since the start of 2024. There have been 7 outbreaks (defined as 3+ related cases) reported in 2024, and 73% of cases (83 of 113) are outbreak-associated. For comparison, 4 outbreaks were reported during 2023 and 48% of cases (28 of 58) were outbreak-associated.
 - As a reminder, cases of measles are immediately reportable in the U.S. and Montana. Please contact CDEpi at 402-444-0273 to report any suspect cases. This number is available 24/7.
 - Additional data on nationwide cases and outbreaks are available on the [CDC website](#).
- **Montana Statewide Syndromic Surveillance: Norovirus and Hand, Foot, & Mouth**
 - Below are data reported from the Montana Syndromic Surveillance system. These data capture real-time changes in the percentage of emergency department (ED) visits related to norovirus or hand, foot, and mouth across the state and are monitored for significant increases. While most hospital facilities participate in syndromic surveillance, not all do. The charts represent only reported data; true numbers may vary. For questions on the data please contact Vanessa Whattam at 406-439-5324 or vanessa.whattam@mt.gov.

Gallatin City-County Communicable Disease Program

Hours: M-F 8:00AM-5:00PM: (406) 582-3100

After hours 24/7 line: (406) 582-2100 ext. 2, ask to page the Health Dept

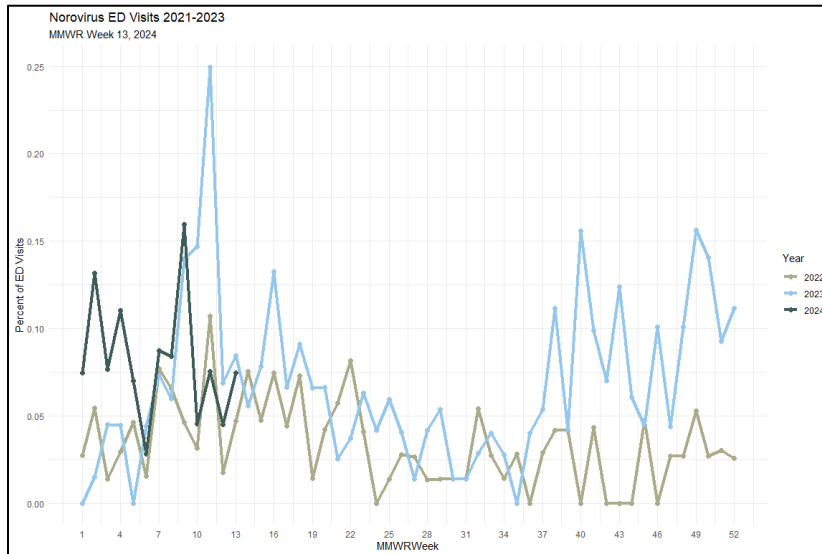
www.healthygallatin.org

[Reportable Communicable Disease List](#)

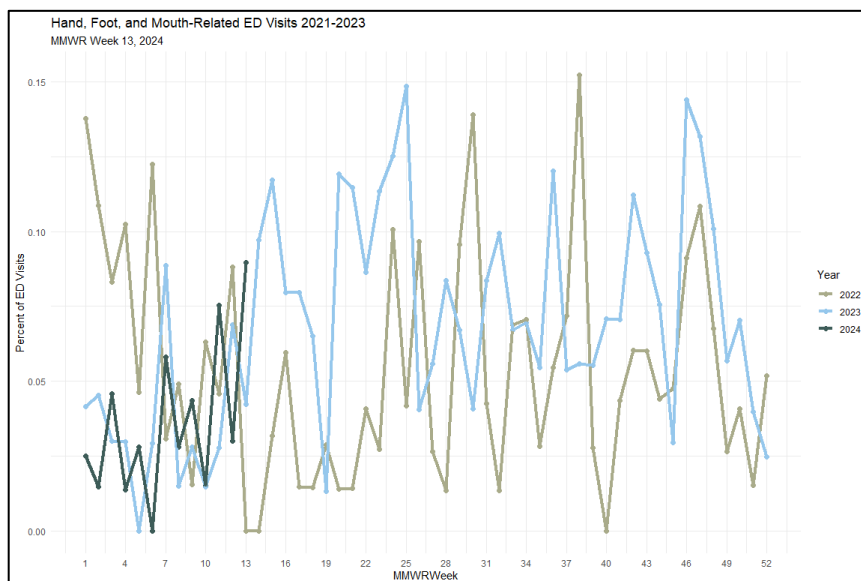
Questions? Please Contact:

Gallatin County Weekly Communicable Disease Report

- **Norovirus-related ED visits** accounted for 0.1% (5 out of 6693) of total ED visits during MMWR Week 13 in 2024 (March 24 - March 30) which is 0.1% decreased from the previous week. In 2023, norovirus-related ED visits made up 0.1% (6 out of 7093) of the total ED visits during MMWR Week 13. Over the past five weeks, the mean percentage of norovirus visits in 2024 is not statistically significantly different from the percentage for the same period in 2023. The preliminary rate for MMWR Week 14, 2024 (March 31 – April 06) is 0.1%.



- **Hand, foot, and mouth-related ED visits** accounted for 0.1% (6 out of 6693) of total ED visits during MMWR Week 13 in 2024 (March 24 - March 30) which is 0.1% increased from the previous week. In 2023, hand, foot, and mouth-related ED visits made up 0% (0 out of 7093) of the total ED visits during MMWR Week 13. Over the past five weeks, the mean percentage of hand, foot, and mouth visits in 2024 is not statistically significantly different from the percentage for the same period in 2023. The preliminary rate for MMWR Week 14, 2024 (March 31 – April 06) is 0.1%. Graph continued on next page:



Gallatin City-County Communicable Disease Program

Hours: M-F 8:00AM-5:00PM: (406) 582-3100

After hours 24/7 line: (406) 582-2100 ext. 2, ask to page the Health Dept

www.healthygallatin.org

[Reportable Communicable Disease List](#)

Questions? Please Contact: